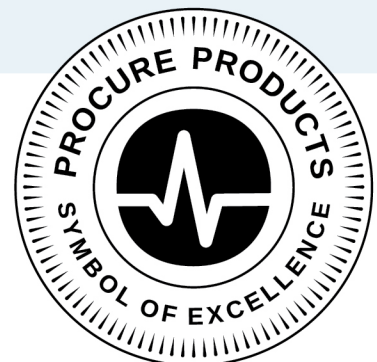
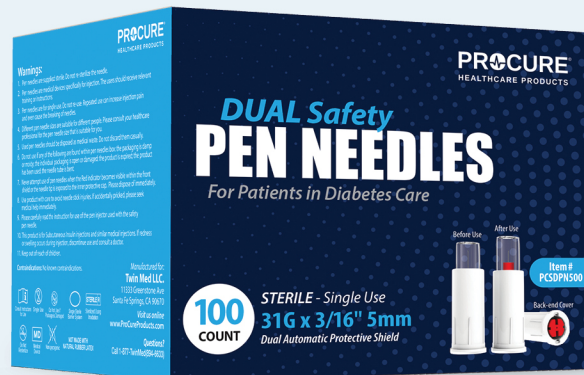
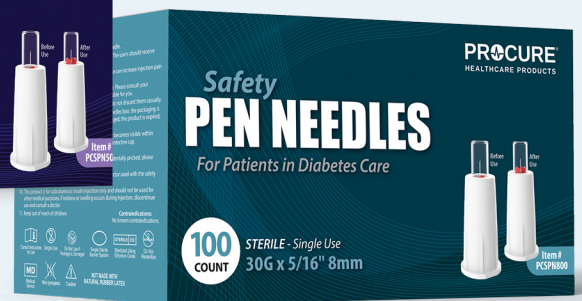
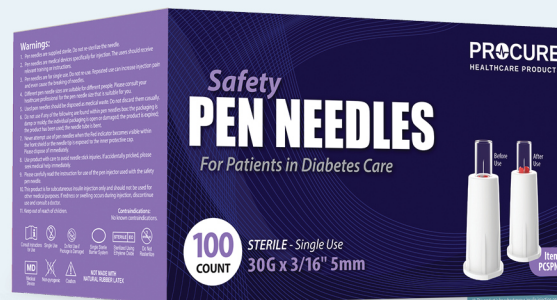


Safety PEN NEEDLES

For Patients in Diabetes Care

TRAINING GUIDE



Instructions for Use



Safety PEN NEEDLES

For Patients in Diabetes Care

For healthcare professionals who support individuals with diabetes requiring insulin therapy, the use of reliable, safety-engineered pen needles and proper injection technique is vital to achieving safe and effective treatment outcomes.

Keep this reference guide readily available to ensure correct use of ProCureSafe Safety Pen Needles. Prior to each injection, review the pen injector's instructions to confirm proper function and accurate insulin delivery. If you are new to using the pen injector or need additional clinical support, please call 1-804-PROCURE (776-2873).

Indications for Use

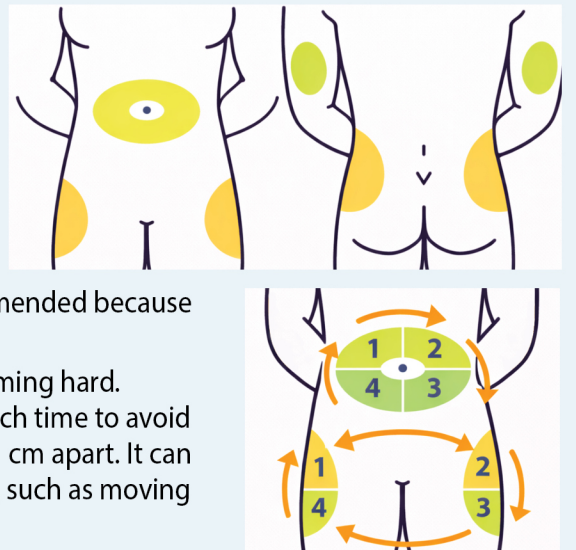
The Disposable Insulin Pen Needle is designed for use with a pen injector device to deliver insulin via subcutaneous injection. It includes a built-in safety guard that automatically covers the needle after use, helping prevent accidental needle sticks and reducing the risk of injury.

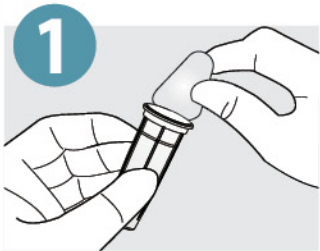
Choosing Site

Before injecting, cleanse the injection site and wash your hands to help prevent contamination.

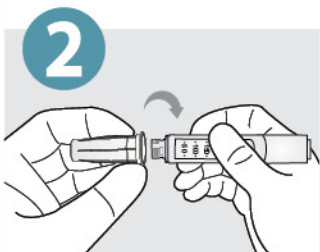
Insulin can be injected into the fatty areas of the body, such as the stomach, buttocks, back of the upper arms, or the front or outer part of the upper thighs, as shown in the diagram. Please note, injections into the upper arm or the inner part of the upper thigh are not recommended because there is a higher chance of injecting into a muscle in these areas.

Change your injection spot regularly to help prevent tissue from becoming hard. Even within the same general area, rotate the exact injection points each time to avoid lumps under the skin (lipohypertrophy). Space each injection at least 1 cm apart. It can be helpful to follow a simple rotation pattern within the injection area, such as moving in a clockwise direction, to make rotation easier to remember.

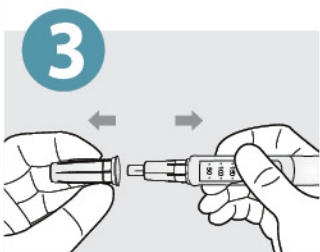




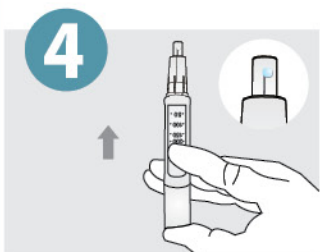
1. Confirm the integrity of the single package of the product before use. Peel off the sealing film from the shield of the pen needle.



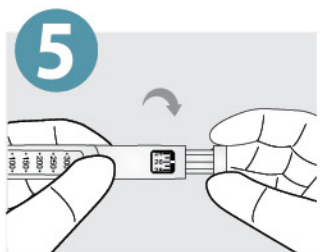
2. Holding the shield, align the end of needle hub with the refill and screw it clockwise onto the injection pen.



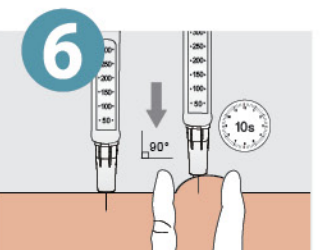
3. Gently remove the shield horizontally.



4. Before each injection, prime the pen by dialing 2 units. Hold the needle pointing upward, flick the pen to move any air bubbles to the top, then press the injection button until a drop of liquid appears at the needle tip.



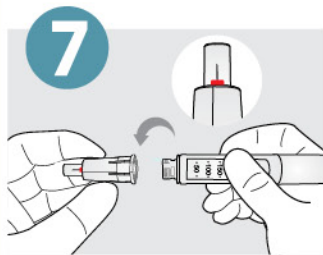
5. Select the insulin drug dose on the injection pen according to the instruction manual of the injection pen.



6. Clean injection site with alcohol pad prior to injecting. When using, pierce the needle vertically (90°) into the skin until the transparent protective cap is fully retracted, and the end face of the inner protective cap is in contact with the skin for injection. This will take approximately 10 seconds to complete.

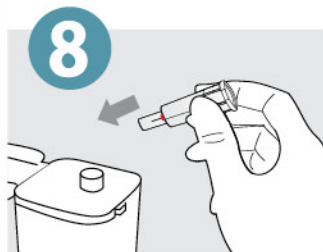
(it is recommended that you inject vertically into the skin (at a 90° angle) without a skin fold to prevent injecting too deep and into the muscle issue.)

Some patients may need more than 10 seconds, especially when giving higher doses.



7. After injection, the inner protective cap rebounds to cover the needle tip and automatically activates the safety mechanism and the red indicator becomes visible within the front shield..

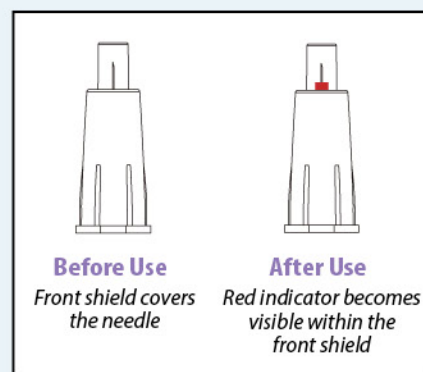
* On the Dual Safety unit, the rear red shield will cover the back of the needle.



8. Dispose the used pen needle in a sharps container.

Important Safety Information

1. Used pen needles should be disposed as medical waste. Do not discard them casually.
2. Do not use if any of the following are found within pen needles box: the packaging is damp or moldy; the individual packaging is open or damaged; the product is expired; the product has been used; the needle tube is bent.
3. Never attempt use of pen needles when the red indicator becomes visible within the front shield or the needle tip is exposed to the inner protective cap. Please dispose of immediately.
4. Use product with care to avoid needle stick injuries. If accidentally pricked, please seek medical help immediately.
5. Please carefully read the instruction for use of the pen injector used with the safety pen needle.
6. This product is for subcutaneous insulin injection only and should not be used for other medical purposes. If redness or swelling occurs during injection, discontinue use and consult a doctor.



Compatible with pen injector equipment

HumaPen® Luxura, Ergo II, Luxura HD /

YpsoPen® Ypsomed AG /

Novo Nordisk® NovoPen 4, NovoPen 5, NovoPen Echo /

AllStar® / GensuPen®, GensuPen 60-1 /

ClickSTAR®

DUAL

NovoPen®6, NovoPen®5, Ozempic®, NovoRapid®FlexPen®

Victoza®Pen / Humalog®KwikPen®, HumaPen®Ergo II /

Lantus®SoloStar®, KlikSTAR® / Autopen®24 / GensuPen,

GensuPen 60-1 / Byetta® / YpsoPen®, Gansulin Pen /

UNIPEN® / GONAL-f® / Hansoh Pen / XiuLin Pen®

TwinMed LLC.
11333 Greenstone Ave Santa Fe Springs, CA 90670

1-877-TwinMed(894-6633)

www.ProCureProducts.com

PROCURE®
HEALTHCARE PRODUCTS